



# THYC Hartlepool to Tyne

Saturday 24th August 2024

## SAILING INSTRUCTIONS

### 1. Rules

The event will be governed by RRS 2021-2024, the prescriptions of the RYA, the IRPCS, NECRA rules and these Sailing Instructions.

### 2. Risk Statement

Rule 4 of the ISAF Racing Rules of Sailing states: "The responsibility for a boat's decision to participate in a race or to continue racing is hers alone." Sailing is by its nature an unpredictable sport and therefore involves an element of risk. By taking part in the event, each competitor agrees and acknowledges that:

- a) They are aware of the inherent element of risk involved in the sport and accept responsibility for the exposure of themselves, their crew and their boat to such inherent risk whilst taking part in the event;
- b) They are responsible for the safety of themselves, their crew, their boat and their other property whether afloat or ashore;
- c) They accept responsibility for any injury, damage or loss to the extent caused by their own actions or omissions;
- d) Their boat is in good order, equipped to sail in the event and they are fit to participate;
- e) The provision of a race management team, patrol boats, umpires and other officials and volunteers by the organiser does not relieve them of their own responsibilities;
- f) The provision of patrol boat cover is limited to such assistance, particularly in extreme weather conditions, as can be practically provided in the circumstances;
- g) For offshore races: They are responsible for ensuring that their boat is equipped and seaworthy so as to be able to face extremes of weather; that there is a crew in sufficient number, experience and fitness to withstand such weather; and that the safety equipment is properly maintained, stowed and in date and is familiar to the crew;
- h) Their boat is adequately insured, with cover of at least £3 million against third party claims, which must include racing.

The safety of a boat and her entire management, including insurance, shall be the sole responsibility of the owner/person in charge, who must ensure that the boat and crew are adequate to face the conditions that may arise in the course of the race.

### 3. Disclaimer

Neither these Sailing Instructions nor any inspection of the boat limits or reduces the absolute responsibility of the owner/person in charge for the crew, the boat and her management. Every owner/person in charge warrants the suitability of the boat for the race or races and that the boat contains at least the minimum safety equipment specified by NERR/NECRA. By participating in this event each competitor agrees to release the race organizers from any and all liability associated with their participation in this event to the fullest extent permitted by law.

### 4. Conditions of Entry

- a) Boats must be registered members of THYC or NECRA prior to the start of this event.
- b) Each boat shall hold a valid NERR rating certificate.
- c) Boats must be adequately insured.
- d) All yachts shall comply with the WSOSR 2022 – 2023 Cat4 Monohulls.
- e) All courses are designated category 4.
- f) The wearing of lifejackets is strongly recommended for all events but is **compulsory** for any race where sails need to be reefed or during the hours of darkness.

- g) ISAF Cat 4. Liferrafts are strongly recommended.
- h) Boats may be inspected before or after racing.

## 5. Intention to Race

Prior to the event boats should indicate their intention to race on the NECRA website.  
On the day boats **must** indicate their intention to race by notifying the race station on channel M2. This notification must include the boats name, class and the number of people on board.

## 6. Classes

Boats will compete in one of the three classes below:-

Class 1 – boats with a NERR rating of TCF 0.9000 and above.

Class 2 – boats with a NERR rating of TCF below 0.9000

Class 3 - is designated a 'white sail' class.

Boats in Class 3 shall not use a spinnaker and their non-spinnaker NERR rating will be used to calculate the results

Boats are required to fly the appropriate numerical pennant from their backstay.

## 7. Notice to Competitors

Notices to competitors will be posted in the THYC website and on the NECRA website.

## 8. Changes to Sailing Instructions

Any changes to Sailing Instructions will be posted on the THYC notice board not later than 90 minutes before the scheduled race.

## 9. Schedule of Race

Saturday 24th August                      All Classes                      Warning: 09:55                      Start: 10:00

## 10. Tidal Times

Hartlepool Tidal times BST			Tyne Tidal times BST		
Sat 24th Aug	07:32	5.56m	Sat 24th Aug	19:46	4.82m

## 11. Starting Sequence

Signal	On the water – VHF Ch.M2	From the THYC race station
Warning signal (5 minutes to start)	10sec Count down	One white light
Preparatory signal (4 minutes to start)	10sec Count down	Two white lights
1 Minute to start	10sec Count down	Three white lights
Start	10sec Count down	All lights extinguished

These THYC light signals may be supplemented by a countdown on VHF Ch.M2.

## 12. Recalls

Signal	On the Water	From the YC
Individual recall	VHF Ch. M2	One white light
General recall	VHF Ch. M2	Four white lights
Postponement	VHF Ch. M2	Two white lights

## 13. Starting Line

The start line is a transit line between a white light on the clubhouse situated below the race station windows and the white pole on the end of the South pier carrying the red harbour light also between the inner and outer distance marks. The marks are tide and wind borne and may not be on the transit line.  
**If a race is started or finished from the water the transit line is between the inner distance marker buoy and the white pole on the end of the South Pier.**

#### 14. Course

THYC Start Line North to South  
(THYC M),  
(Longscar Bell),  
Tyne finish line.  
Marks in brackets are left to Port.

#### 15. Finishing line

A transit line between the Tyne South harbour entrance pier end and the inner South Groyne lighthouse approximately 1500m inside of the Harbour mouth on approximate bearing 256deg.  
It is recommended that yachts cross the line at least 1.0Nm east of the pier end to avoid any ship movements.

**All boats must take a photo of their GPS position at the finish and note the boats behind and in front at that time.**

**Own times must be taken and notified to THYC NECRA representative text 07976 938064, email [honsec@necra.co.uk](mailto:honsec@necra.co.uk)**

**Finish times must be notified no later than 2 hours after the time limit or the entrant will be deemed as DNF.**

All Competitors should check with the harbour master (Tyne VTS) on Ch.12 before entering the harbour. All yacht must have their engine on when approaching and be prepared not to enter the harbour entrance if commercial shipping is moving.

#### 16. Time Limit - 1800 Saturday 24th August.

#### 17. Course Amendments

The course may be amended. An announcement will be made via VHF Ch.M2. The OOD will attempt to confirm by VHF that each competitor is aware of the amendments. However, the onus is on competitors to monitor VHF Ch.M2 for such announcements.

#### 18. Continuous Obstructions

The Tees and Hartlepool Approach Channels defined by the red and green channel buoys are designated as continuous obstructions and will result in automatic disqualification if entered when racing. Commercial shipping in many cases is constrained by draft and cannot take action to avoid collision. Traffic leaving or entering these areas might require to alter course unexpectedly. If in doubt about ship movements please call Tees VTS on channel 14.

#### 19. Retirement

Any boat retiring from the race must inform NECRA representative by text message on 07976 938064 or e-mail [honsec@necra.co.uk](mailto:honsec@necra.co.uk)

#### 20. Penalties

If a yacht contravenes a rule of part 2 of RRS while racing she may exonerate herself by taking a 720° turns penalty in accordance with RRS44.

#### 21. Protests

Protests must be advised to OOD by VHF Ch.M2 and protest forms handed to THYC race officer as soon as practical after the finish of the last boat.

#### 22. Radio Communication

A boat shall neither make radio transmissions while racing nor receive communications not available to all boats. This restriction also applies to mobile phones.

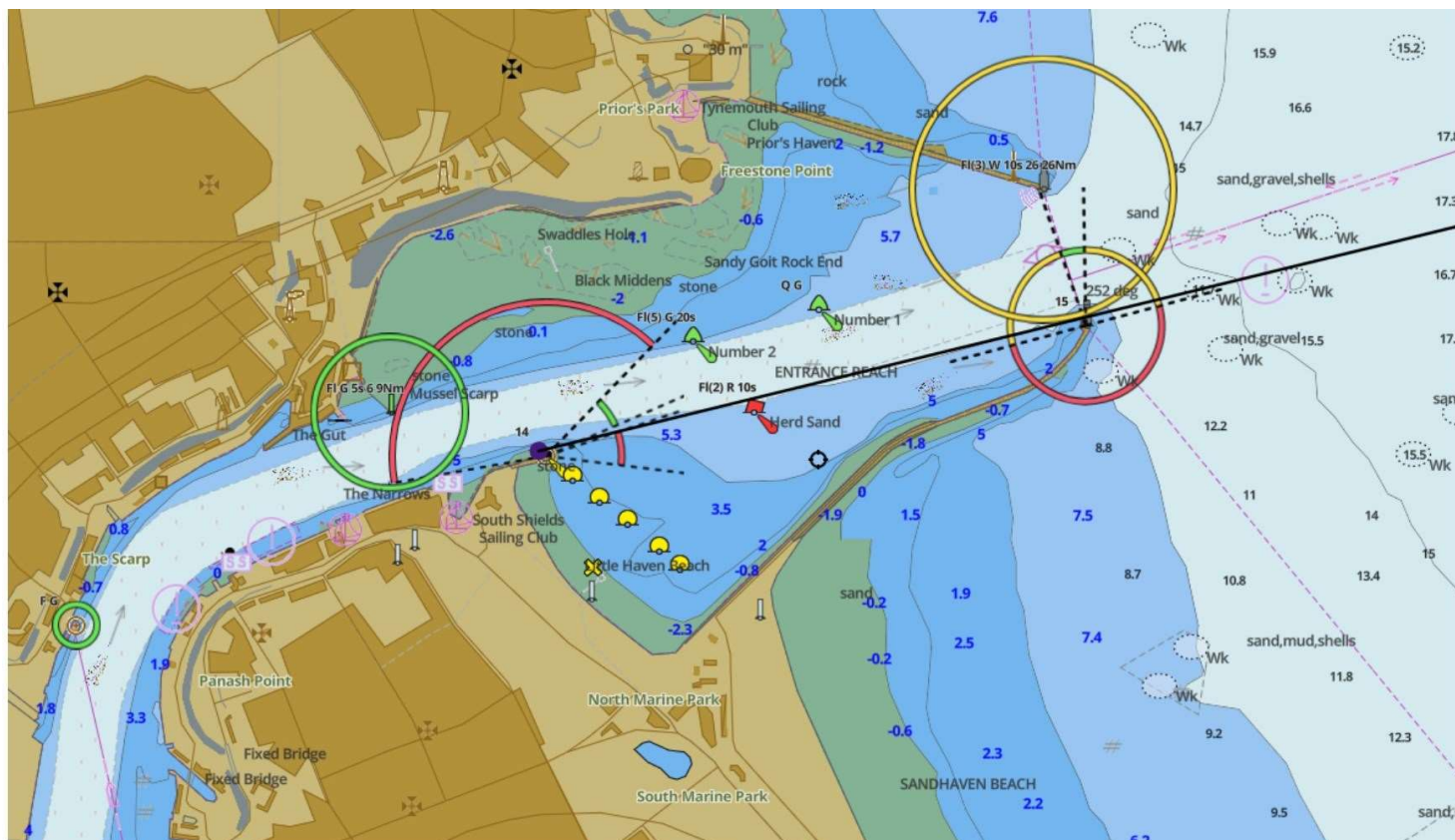
THYC "Race Control" will address all racing yachts as "NECRA fleet" on VHF Ch.M2/P4

### 23. Scoring

Race results will be calculated using boats' NERR ratings as shown in the registered details on the NECRA Website at the time of the event.

NECRA scoring will be as RRS Appendix A using low points. For the Offshore NECRA Series boats will score their best results from half of the races to count, rounded up to the nearest whole number.

### Finish Line – Tyne harbour entrance



When you can see the red South Groyne lighthouse around the end of the South Pier you have finished.

