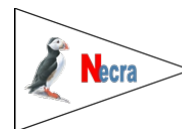




Tees and Hartlepool Yacht Club

Regatta 24 May 2025



CHANGES TO SAILING INSTRUCTIONS

The following instructions will supersede those in the SI as follows:

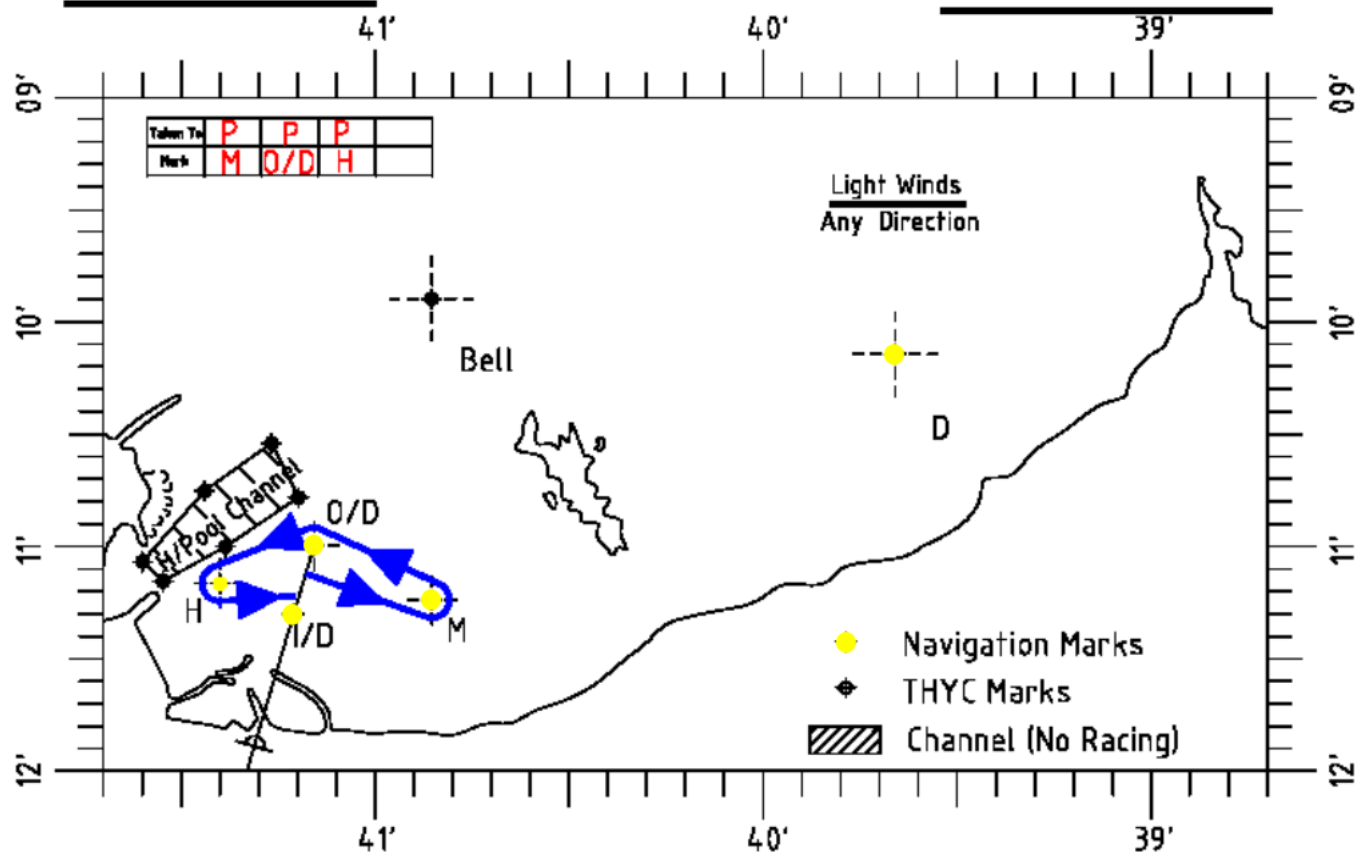
- All races will be run from the Tower using the THYC marks and courses.
- No committee boat will be present on the water, and no extra race marks are laid for the start line or the course.
- Before the race start, all boats must indicate their intention to race by notifying the THYC race station call sign "Tees Tower" on VHF Ch. M2 at least 15 minutes before the start sequence. This notification must include the boat's name, class and the number of people on board.
- The start and finish line will be a transit between the light on the THYC Sailing Club Tees Tower and the white pole on the south outer pier.
Also between the "Inner" and "Outer" yellow marks. These marks are tide bound so may not be exactly on the start line.
- Boats must pass between the Inner and Outer distance marks at the start and finish of each course.
- The course will be announced 15 minutes before the start on VHF Ch.M2 and will be a combination of courses Alpha, Beta, Charlie, Delta or Echo.
- Courses may be shortened by the display of 2 white lights and announced on VHF as the lead boat approaches finish.
- Start sequence will use a combination of lights and VHF.
- 5 minute -1 light +10 second VHF countdown.
- 4 minute -2 light +10 second VHF countdown
- 1 minute -3 light +10 second VHF countdown
- Start – 0 light +10 second VHF countdown
- Recall – 1 light + VHF
- General recall – 2 light + VHF
- Postpone – 4 light + VHF
- Finish -4 light + VHF
- All communications will be signed from "Tees Tower" on VHF channel M2
- Boats must not enter the Hartlepool channel when sailing between Bell and H.

Distance 1.2 mls.

Course A (Alpha)

March 2018

Time Limit 1.0 hr.

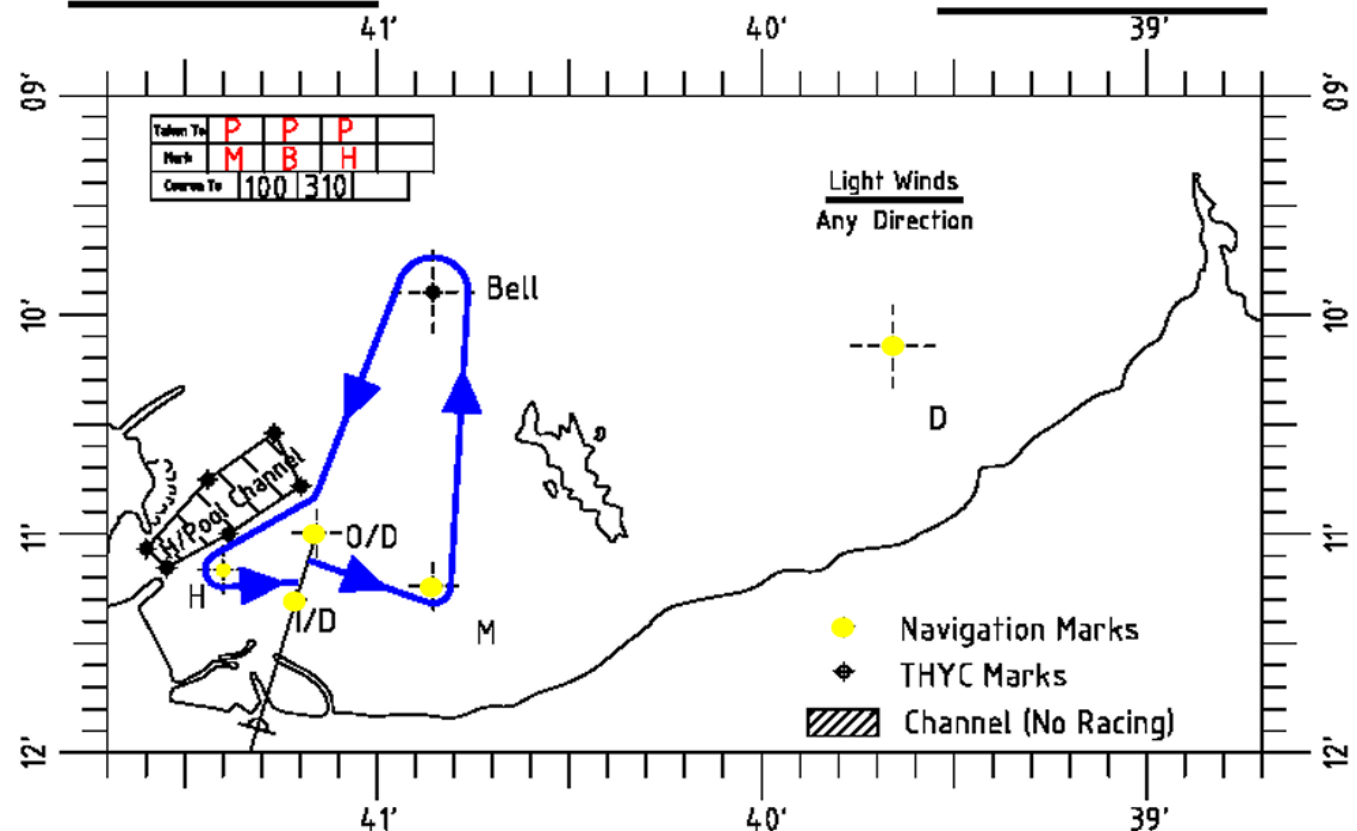


Distance 2.3 mls.

Course B (Bravo)

March 2018

Time Limit 1.5 hrs.

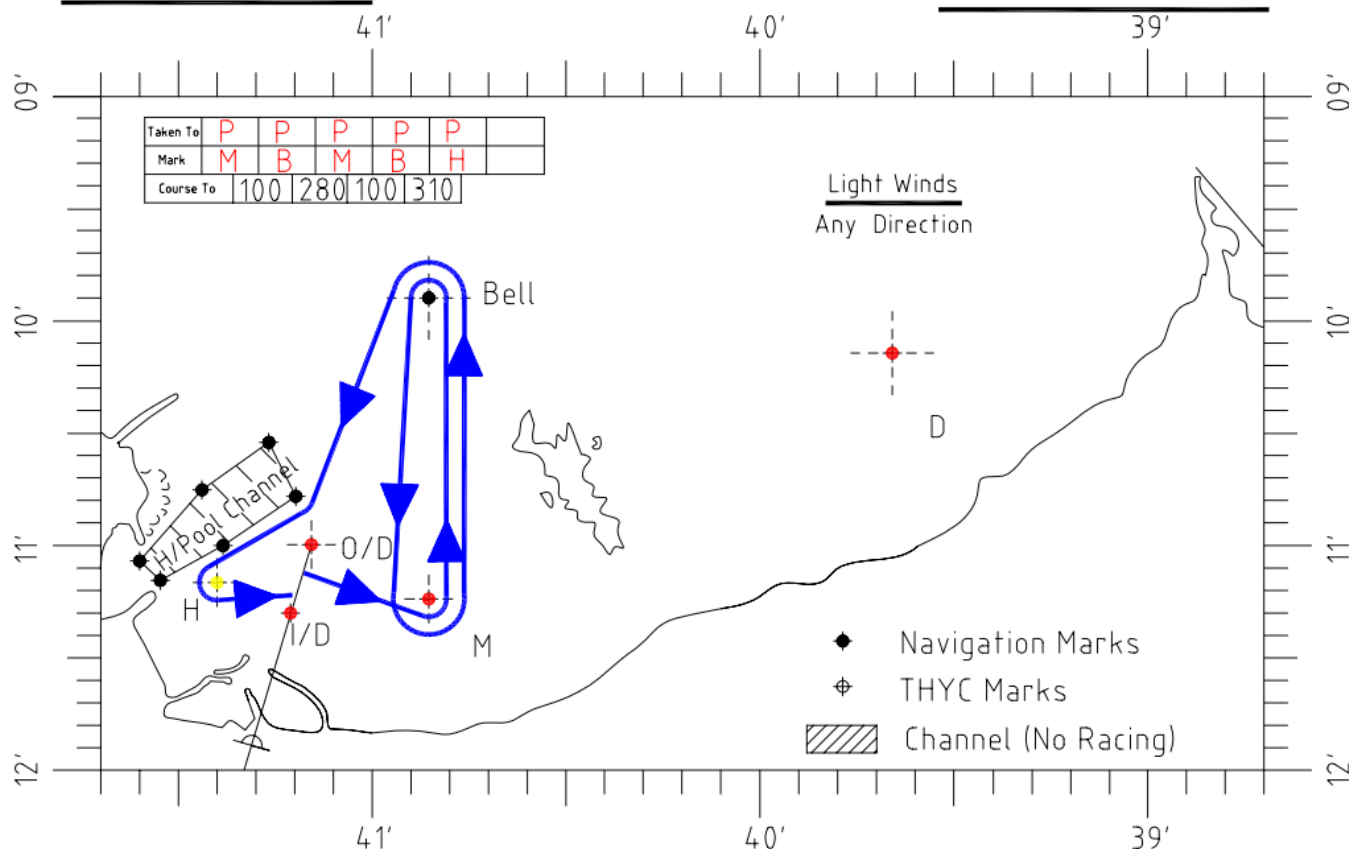


March 2018

Distance 4.4 mls.

Course C (Charlie)

Time Limit 2.0 hrs.

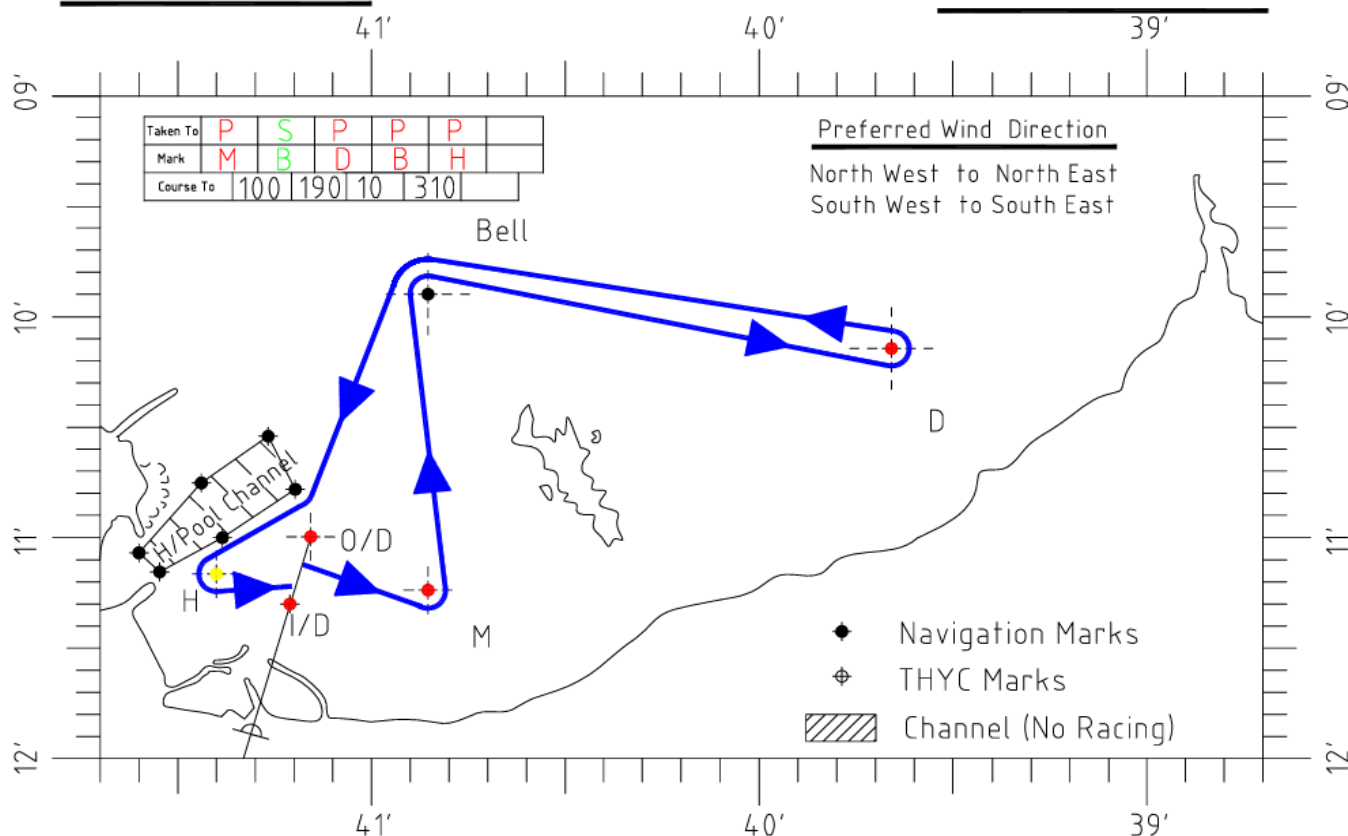


March 2018

Distance 4.2 mls.

Course D (Delta)

Time Limit 2.0 hrs.



March 2018

Distance 6.2 mls.

Course E (Echo)

Time Limit 3.0 hrs.

