



## **Vernon Dawson Cup**



**Scarborough to Whitby Race  
1000hrs Saturday 9<sup>th</sup> June 2012**

***The 2012 Vernon Dawson Race is  
Sponsored by***



*‘Laying the foundations of Teesside’*

***Whitby Yacht Club wishes to thank Heritage Driveways for their kind sponsorship of this event.***

## **SAILING INSTRUCTIONS**

### **1 Rules**

The event will be governed by the rules as defined in the RRS 2009-2012, the prescriptions of the RYA, The International Rules for the Prevention of Collisions at Sea, and the following sailing instructions.

### **2 Conditions of Entry**

Prior to the start of this event boats must be members of SYC or WYC.  
- Yachts may be inspected before or after the race at the discretion of the committee.  
Yachts from other Yacht Clubs may enter the Race by invitation at a cost of £10 per

boat. Please contact WYC Rear Commodore Racing, Matt Robinson via email with your details etc [matt\\_robinson79@hotmail.com](mailto:matt_robinson79@hotmail.com)

**Closing date for entries is Saturday 26<sup>th</sup> May 2012.**

### **3 Handicaps**

Results shall be calculated using the *Portsmouth Yardstick system*. A record of each boat's handicap is required before the start of the race.

### **4 Notices to Competitors**

Notices will be posted in the foyer of Scarborough Yacht Club. Any changes to the sailing instructions will be posted not later than 90 minutes before the start.

### **5 Signals made Ashore**

Any signals made ashore will be displayed at SYC Flagstaff and on their lighting system.

### **6 Protests**

Protests, accompanied with a fee of £5, must be submitted by 1900hrs Saturday 9<sup>th</sup> June 2012 to Whitby Yacht Club.

### **7 Radio Communication**

A boat shall neither make radio transmissions while racing nor receive communications not available to all boats. This restriction also applies to mobile phones.

### **8 Disclaimer of Liability**

Competitors participate in the race at their own risk. See RRS rule 4 Decision to Race. The organisers will not accept any liability for material damage or personal injury or death sustained in conjunction with, or prior to, during or after this event.

### **9 Insurance**

Each participating boat shall be insured with valid third party insurance with a minimum cover of £2,000,000.

### **10 Safety**

SYC boats shall comply with SYC safety regulations.  
WYC boats shall comply with WYC safety regulations (*ISAF Category 4*).

## 11 Whitby Rock & Upgang Rocks

Attention is drawn to an area of rocks extending well offshore to the East of the Harbour Entrance and also Upgang Rocks situated seaward of Upgang Ravine, west of the Race Station. They are weed covered and have a charted depth of 1 metre at MLWS with seas breaking on them in strong N winds. Please see the attached reproduction of the Admiralty Chart for further details

## 12 Retirements

Any boat retiring from the race must inform the Race Committee at the destination Club.

Whitby Race Control Tel: TBN

## 13 Schedule of Race

Start Time	HW Sc'bo	HW Whitby	Bridge Whitby
All Classes 1000 hrs	Sat 0824hrs	Sat 2054 hrs	Sat 1730 hrs

## 13 VHF Channels

Scarborough Race Control and Whitby Race Station will operate on VHF CH M1/37.

## 14 Start Line

A Transit of the diamond on the Club Starting Station and a diamond on the outer pier. The No 2 buoy is the Outer Distance Marker (ODM) and the No 1 buoy is the Inner Distance Marker (IDM) and this constitutes a starting gate which all boats must pass through.

## 15 Start Procedure

TIME	SIGNAL	LIGHTS	HORN	MEANING
0950	Warning signal	Yellow	one	10 mins to start
0955	Preparatory signal	Yellow Green	one	5 mins to start
1000	Starting signal Lights	OUT	one	START

**RRS 30.1 shall apply from 1 minute before the start, except that Code Flag 'I' will not be flown.**

In the event of one or both of the starting gate buoys missing (Buoys 1 or 2) the 'Round the Ends' rule shall not apply and a premature starter shall return to the pre start side of the line and take a two-turns penalty clear of all other yachts.

## 16 Individual Recall

An individual recall shall be indicated by a horn signal and a flashing light will be shown below the starting signals for three minutes to indicate a premature starter. Code flag 'X' will not be flown.

## 17 General Recall

A general recall shall be indicated by two horn signals and instructions confirmed by VHF. No AP flag will be flown.

## 18 Course

Start (North to South),

SYC No 8 to Port,

SYC No 6 Wheatcroft Outfall to Port

Whitby North Cardinal (Whitby Bell Buoy) to Port,

WYC Buoy S to Port,

WYC Buoy P to Port

WYC Finish Line (West to East, WYC Buoy A to Port).

In the event of a light wind race the course may be changed. Any change to the course will be given no later than 90 minutes before the start, information available in the SYC clubhouse.

### Approx Positions;

SYC No 6 Wheatcroft Yellow Special Mark	54° 16.200N 000° 20.850W
Whitby North Cardinal Whitby Bell Buoy	54° 30.330N 000° 36.570W
WYC 'S' Buoy 1.5m x 0.6m Yellow cylinder	54° 30 414N 000 37 433W
WYC 'P' Buoy 1.5m x 0.6m Blue cylinder	54° 29.937N 000 37.399W
WYC 'A' Buoy 1.5m x 0.6m Green cylinder	54° 29.813N 000° 36.98W

## 19 Finish Line

A line between the Race Station and WYC Race Mark "A", the Limit Mark.

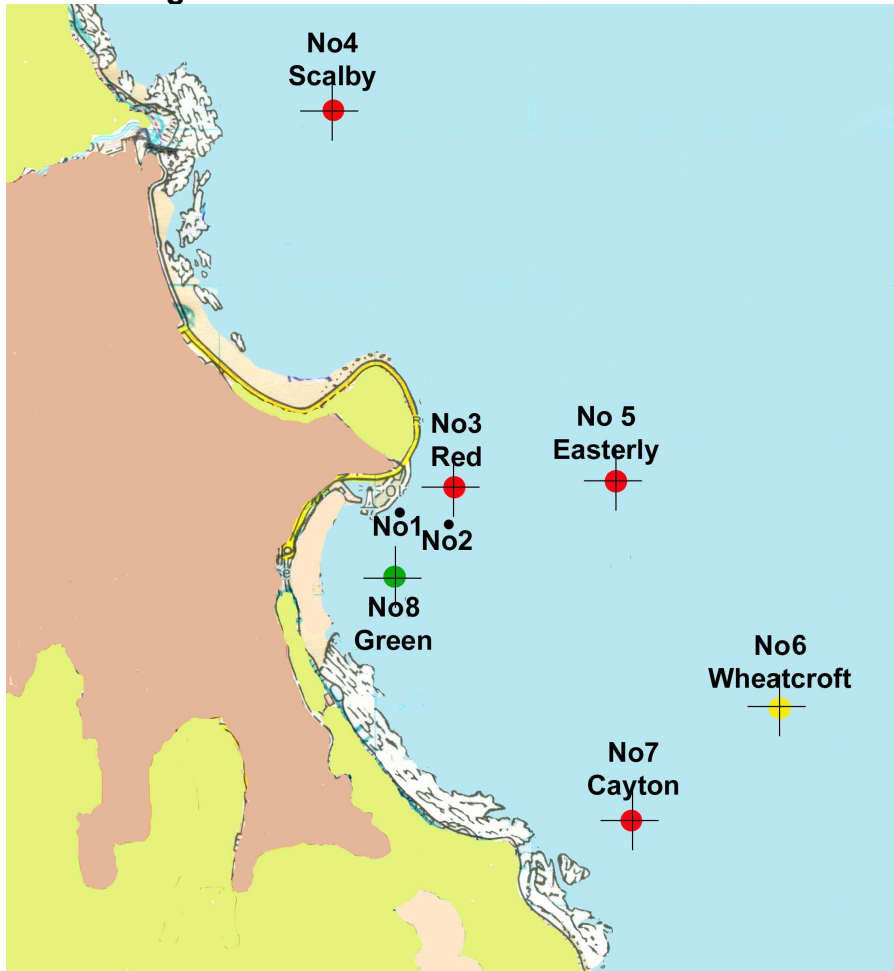
The Race Station is a white hut on The West Cliff about 200m from Whitby Harbour, below and slightly west of the Whitby Pavilion complex. One white light will be shown for approximately 5 seconds when the first boat of each class crosses the finishing line. If time permits, subsequent finishers will also receive a light. Yachts are advised to take their own finishing times as a back up. Whitby Race Station operates on VHF Ch M/M1/37. It is requested that all yachts identify themselves to the Whitby Race Station by name, hull colour and sail number after they have rounded the 'P' Mark on Ch 37, please note you may not receive a reply and keep VHF traffic to a minimum.

**Example 'Whitby Race Station, this is 'Bullitt 2, blue hull, sail number Eight Four Zero Nine passing P mark now, out'**

### Time limit

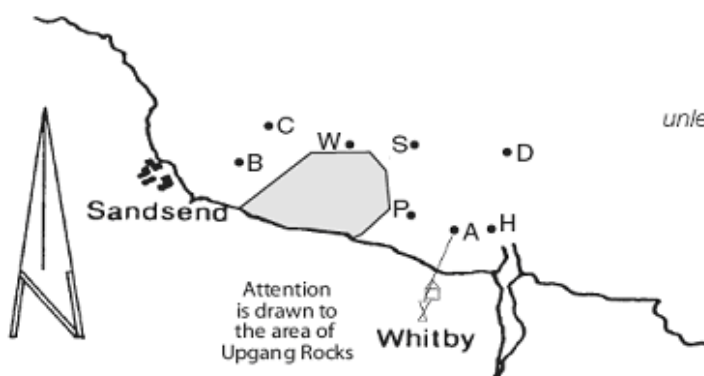
1830 hrs Saturday 9<sup>th</sup> June 2012.

## Scarborough Marks



## Whitby Marks

### Racing Marks 2010



*All marks are to be left to **STARBOARD** unless they appear in brackets ie (B) when they are to be left to **PORT***

- |   |                     |   |                 |
|---|---------------------|---|-----------------|
| A | Outer Limit Mark    | H | Harbour Mark    |
| B | Inner Sandsend Buoy | N | North Mark      |
| C | Outer Sandsend Buoy | P | Peacock's Point |
| D | Whitby Bell Buoy    | S | Hitch Mark      |
|   |                     | W | Westerly Mark   |

